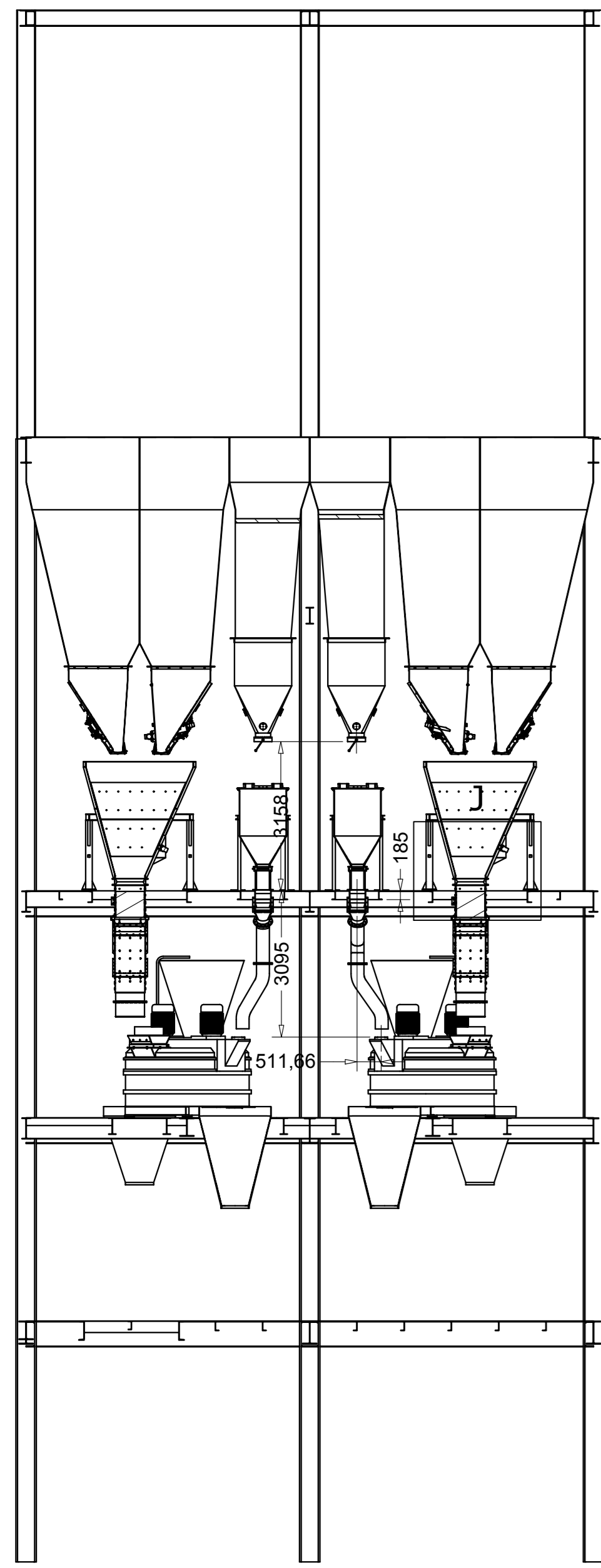
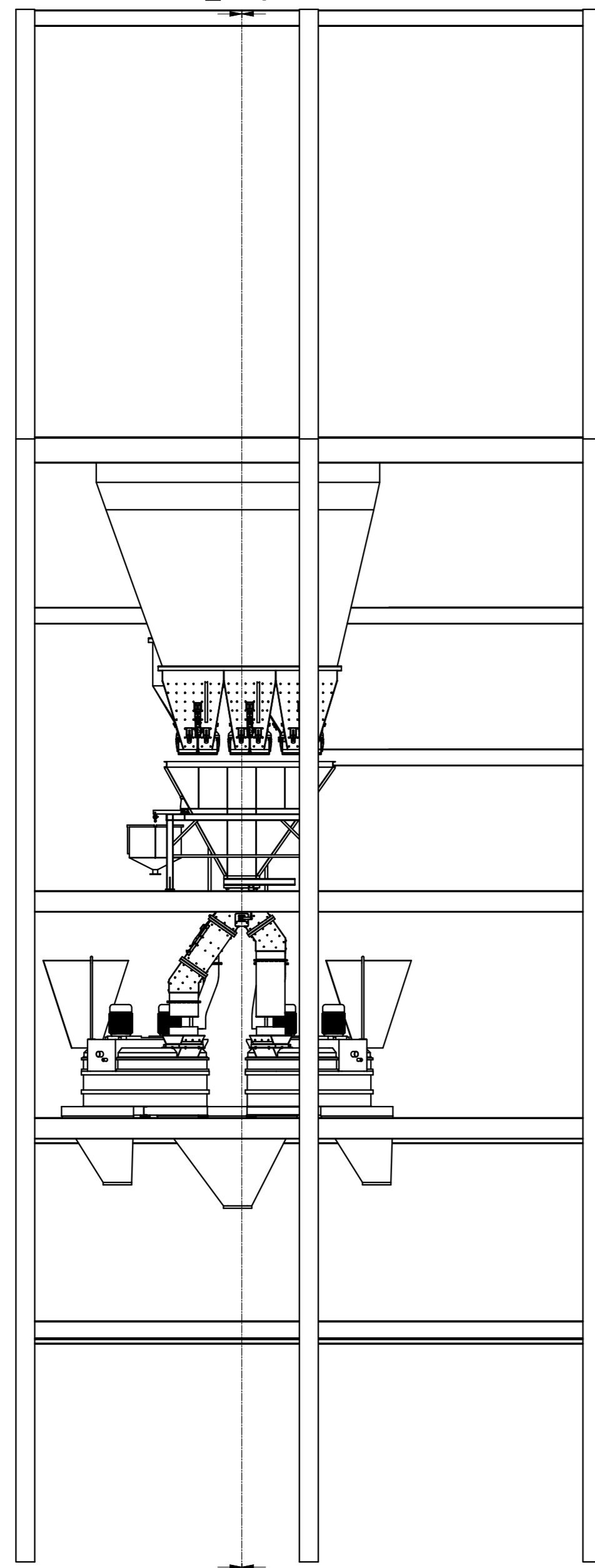


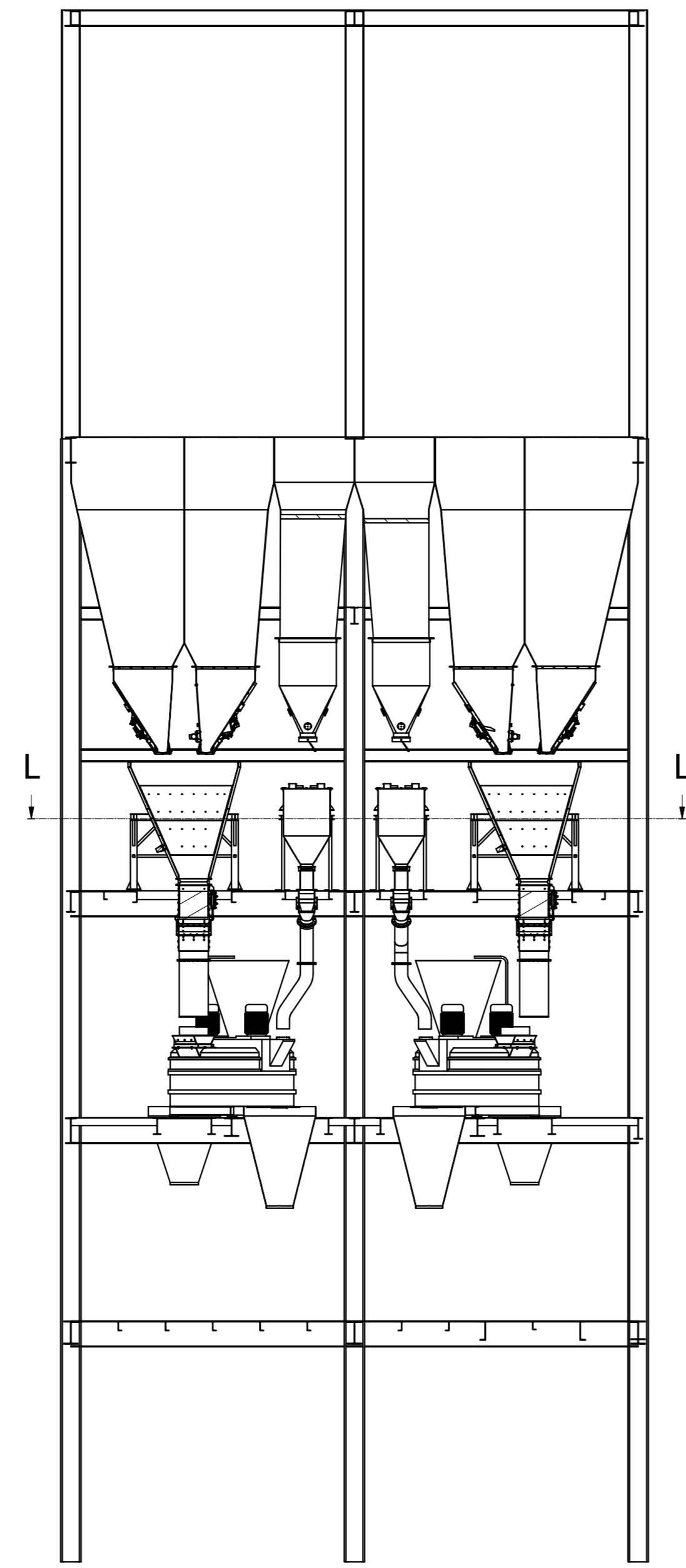
F-F (1 : 100)



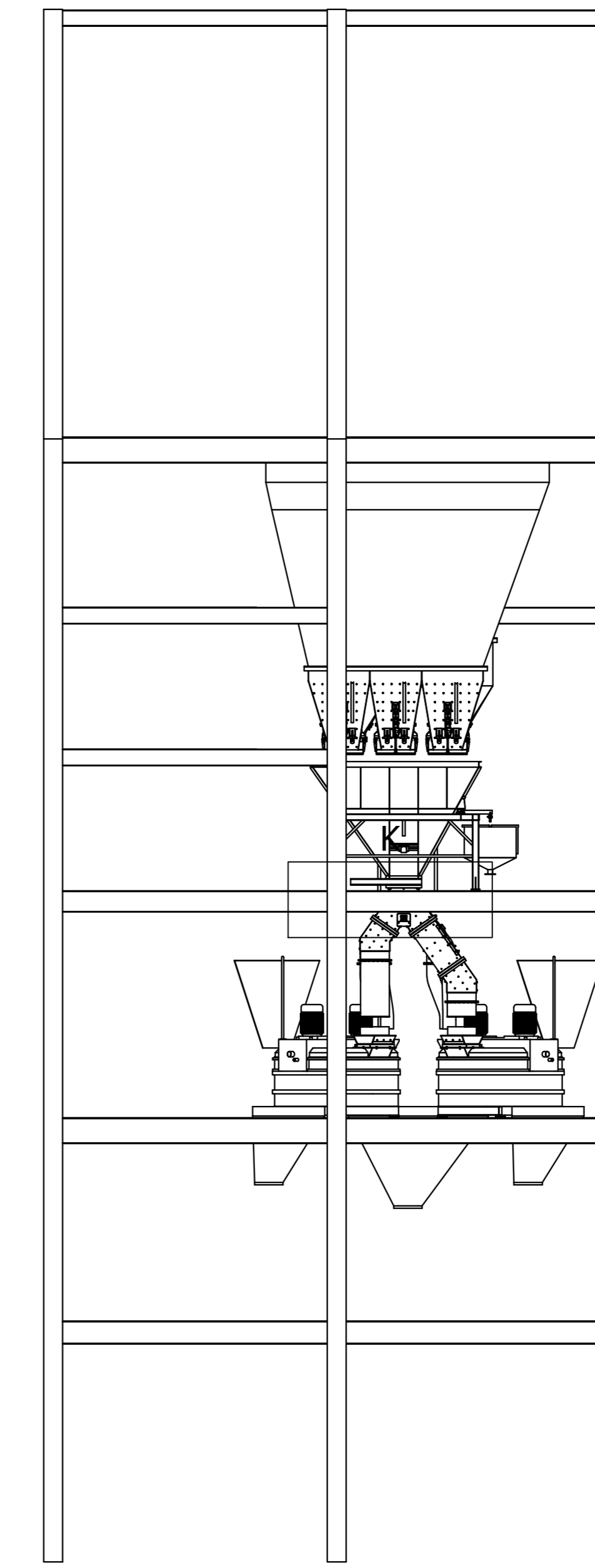
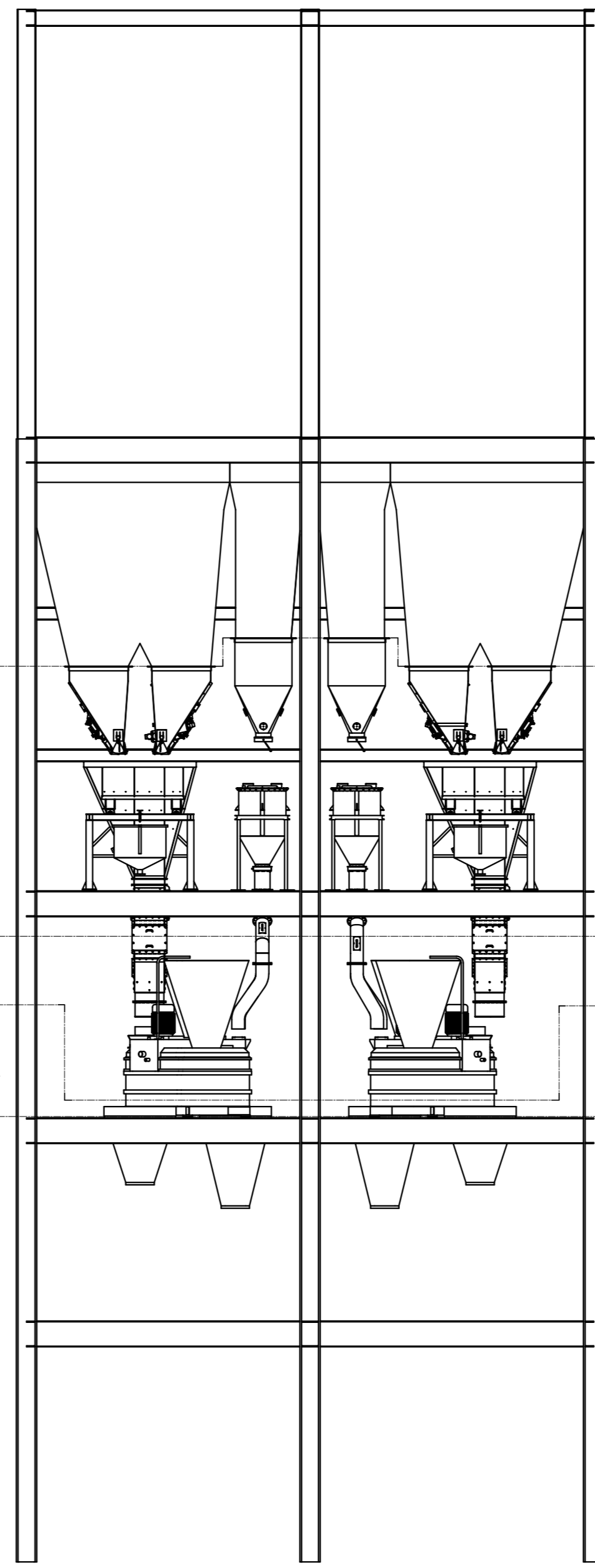
E F



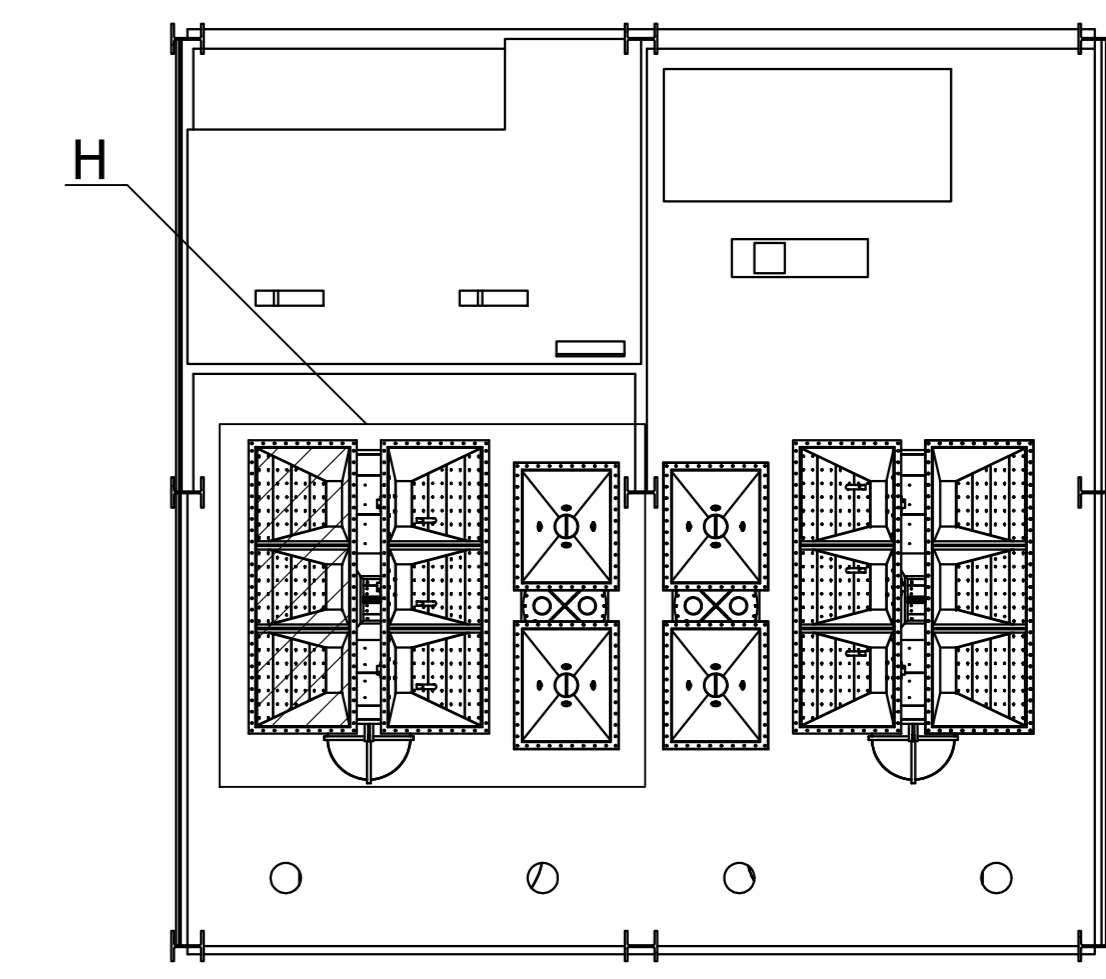
E-E (1 : 100)



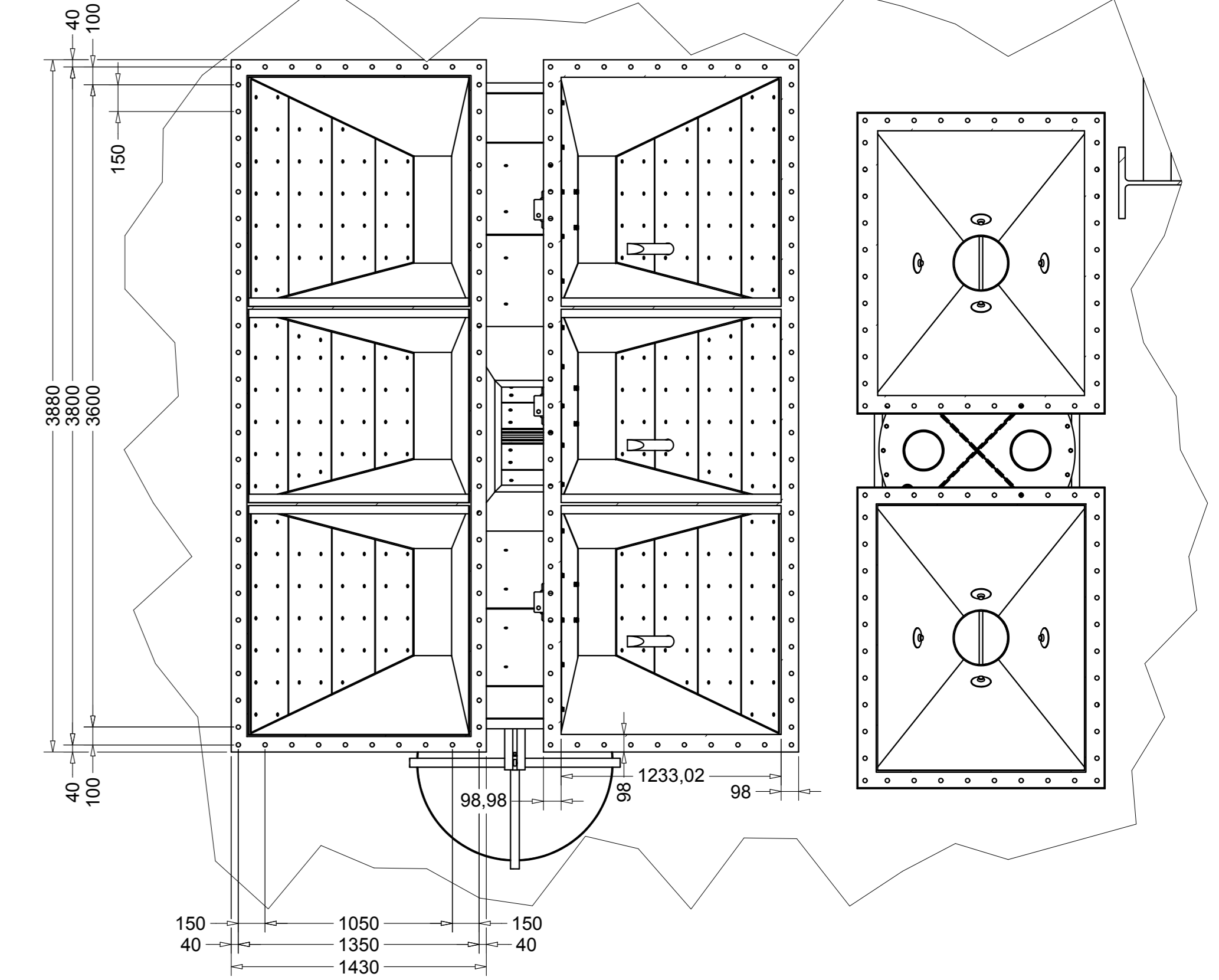
G



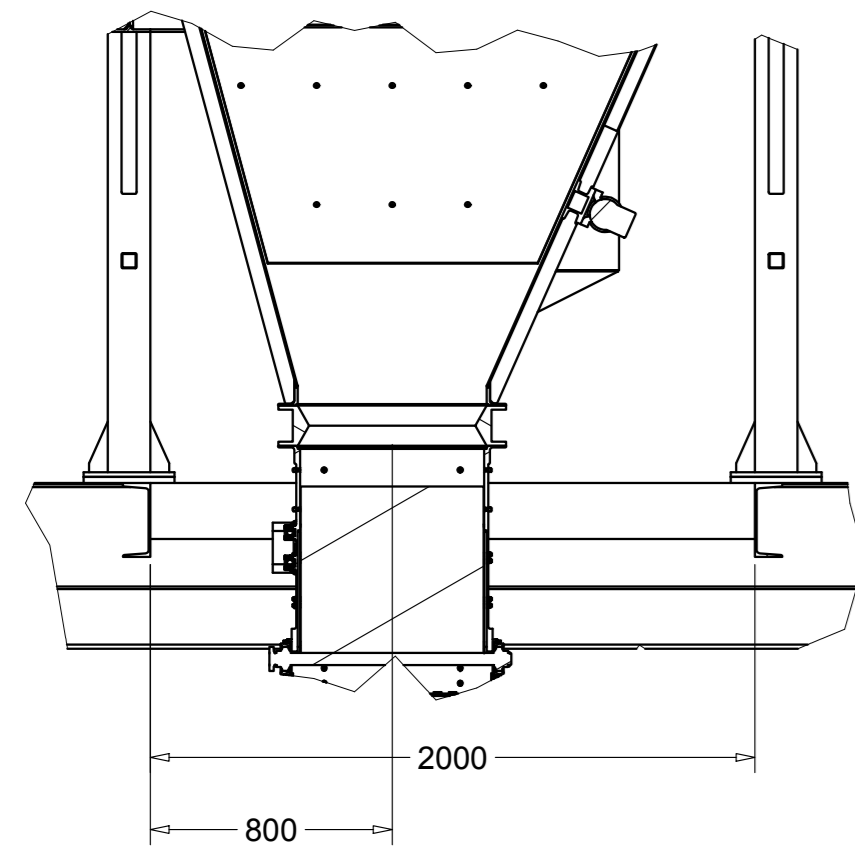
G-G (1 : 100)



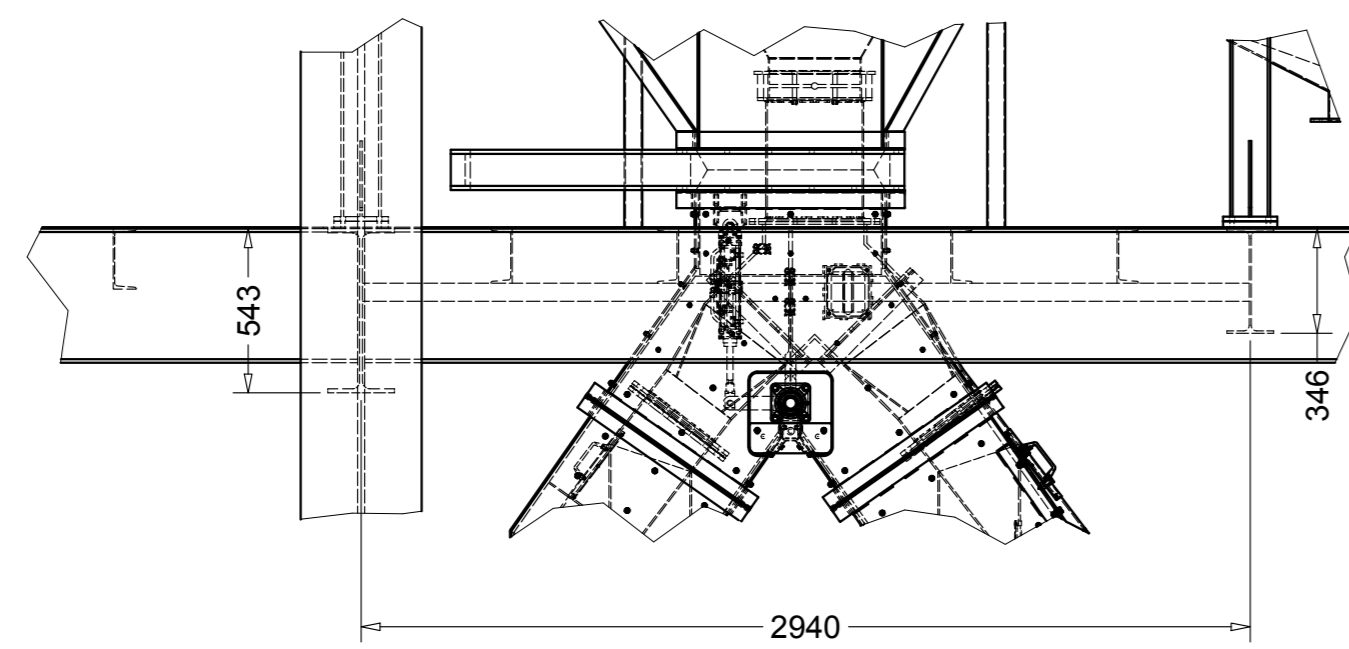
H (1 : 25)



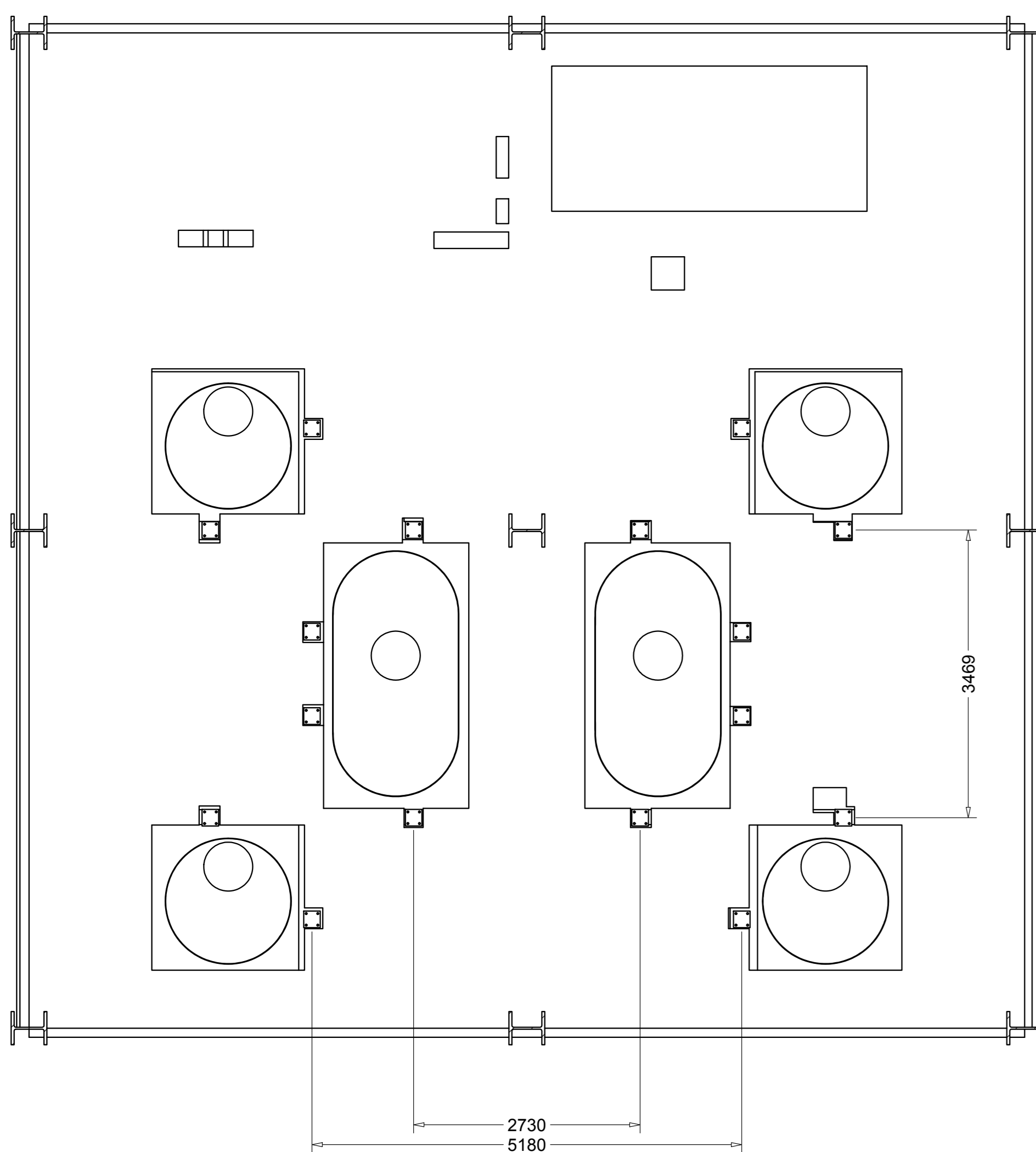
J (1 : 25)



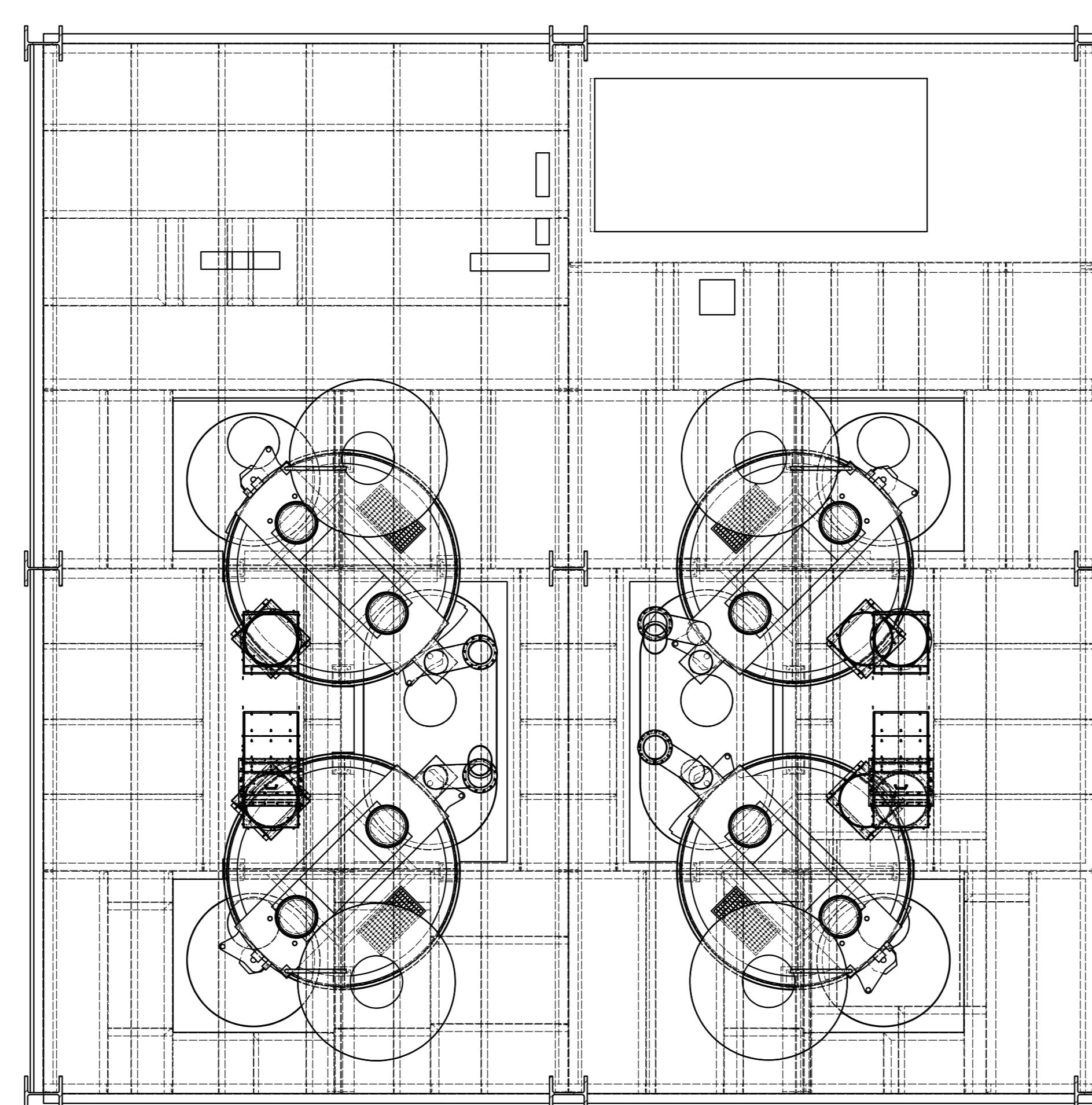
K (1 : 25)



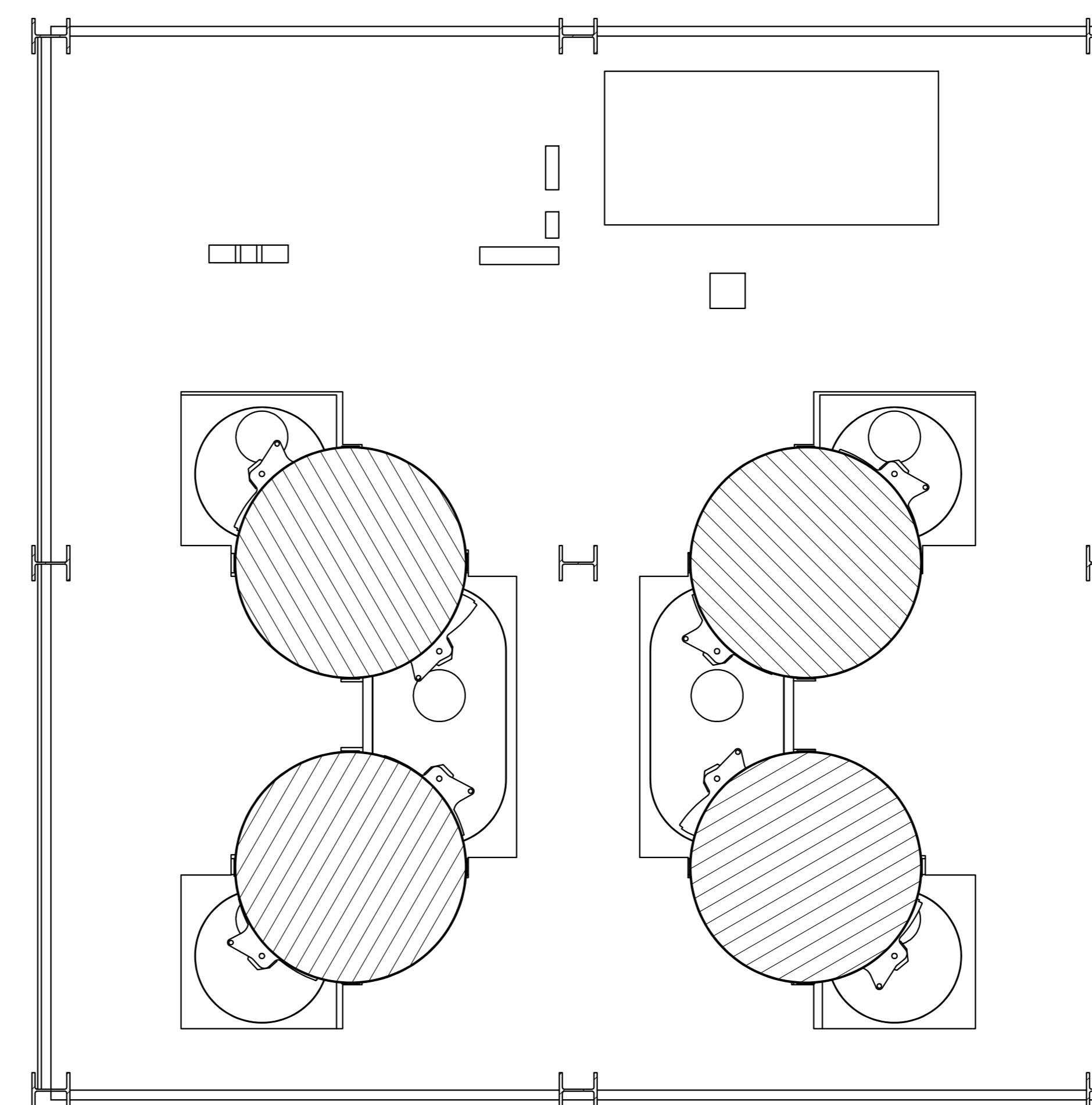
A-A (1 : 50)



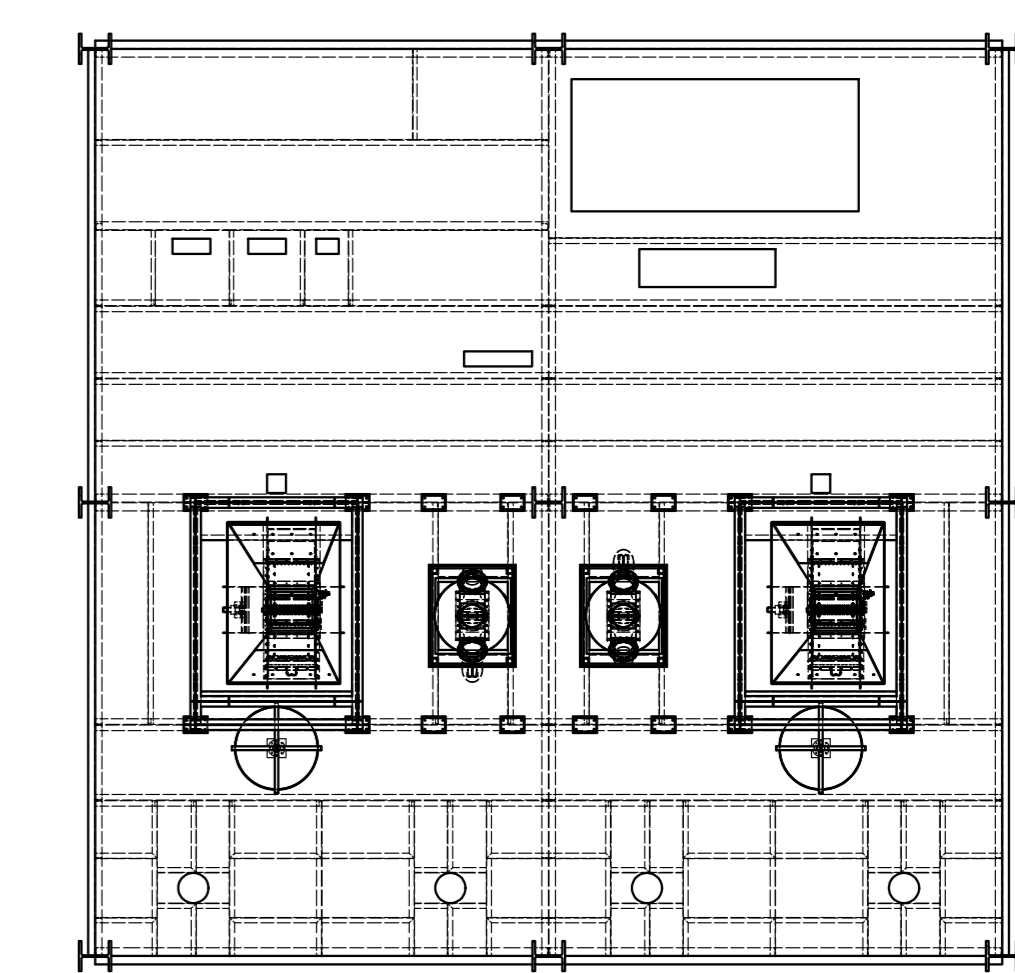
B-B (1 : 50)



C-C (1 : 50)



L-L (1 : 100)



25	2	230.08.003.000.000	Tubazione	0	kg
24	4	230.08.004.000.000	Tubazione	262.5	kg
23	2	230.08.005.000.000	Tubazione	106.4	kg
22	2	230.07.001.000.000	Raccordo quadro tondo	52.8	kg
21	2	WAG-VZF3300SN	Valvola a farfalla	60.6	kg
20	2	WAG-DVAC300N2	Valvola Farfalla apertura manuale	110.6	kg
19	4	230.04.002.000.000	Raccordo angolare da quadro a tondo	134.1	kg
18	2	230.01.002.000.000	Bilancia	534.6	kg
17	2	230.08.002.000.000	Tubazione	376.5	kg
16	2	230.08.001.000.000	Tubazione	115.8	kg
15	4	001.02.002.007.000	Valvola Farfalla apertura manuale	123.7	kg
14	2	230.05.002.000.000	Bocchetta 3 inerti con vibratore	3218	kg
13	4	230.06.001.000.000	Assemble tramoggia per cemento	1801.4	kg
12	2	230.05.001.000.000	Bocchetta 3 inerti	2683.2	kg
11	2	230.03.001.000.000	Canale rettilineo corazzato	467.9	kg
10	4	230.04.001.000.000	Raccordo angolare	690.2	kg
9	4	230.04.001.000.000	Raccordo angolare	884.4	kg
8	2	230.02.001.000.000	Deviatore a 2 vie	354.1	kg
7	2	230.02.001.000.000	Valvola a ghigliottina pneumatica Gr.0600	354.1	kg
6	2	230.01.001.000.000	Bilancia	12360.2	kg
5	2	001.02.002.002.000	Convogliatore per mixer doppio	895.8	kg
4	1	001.02.002.001.000	Convogliatore per mixer singolo	964.8	kg
3	5	001.02.002.006.000	Mixer Tipo B	118741.9	kg
2	4	001.02.002.005.000	Mixer Tipo A	118742	kg
1	3	001.02.002.004.000	Carpenteria torre di betonaggio N°1	174505	kg
Pos	Ola	N° Parte	Descrizione	Peso Tot.	L

Dis. N° 001.02.002.000.000
 Denominazione: Asieme torre betonaggio N°1
 Macchina: Opere esistenti Torre betonaggio 01 Ristrutturazione Vitebak

WELER ITALIA srl - Via A. de Gasperi, 36 - 20011 - Corchetta (MI)
 Tel. +3902-609286 - Fax +3902-491917 - www.weleritalia.it

Revisione Peso Scala Comessa
 N/A N/A

Formato AD
 Data: 03/07/2009
 M.M.